

Fishermen's Marketing Association

February 2007



PFMC IFQ Plan Amendment

Three Alternatives:

Status Quo

IFQ's

Vessel Co-op's for whiting

IFQ System-Allocation

- Quota shares and Quota pounds
- Initial allocation of shares
 - 100% permit holders
 - 75% permit holders & 25% fish processors
- Recent participation
 - None
 - One landing
 - Some other criteria

- Allocation of shares
 - Catch history of permit
 - +
– Equal share of buy-back fish

Note: Catch history is 1994 – 2003
and drop 3 worst years

Post Allocation

- LE permit required
- 30 days to cover landing
- Carryover of unused quota pounds
 - 10% to 30%
- Quota shares and Quota pounds are transferable
- Accumulation caps
 - Total groundfish and any species

IFQ - Administration

- Monitoring
 - Observers
 - Cameras
- Central Registry for shares
- Fees capped at 3%
- Four year review

WHY IFQ's

- Address Bycatch Issue
- Customize Business
- Improve Market Opportunities
- Safety
- Capture lost revenue

Lost Revenue

- 2005 Exvessel value of non-whiting trawl caught groundfish = \$24 million
- Estimated value of potential revenue
 - High = \$60 million (\$36 million increase)
 - Medium = \$45 million (\$21 million increase)
 - Low = \$30 to \$32 million (\$6 to \$8 million increase)

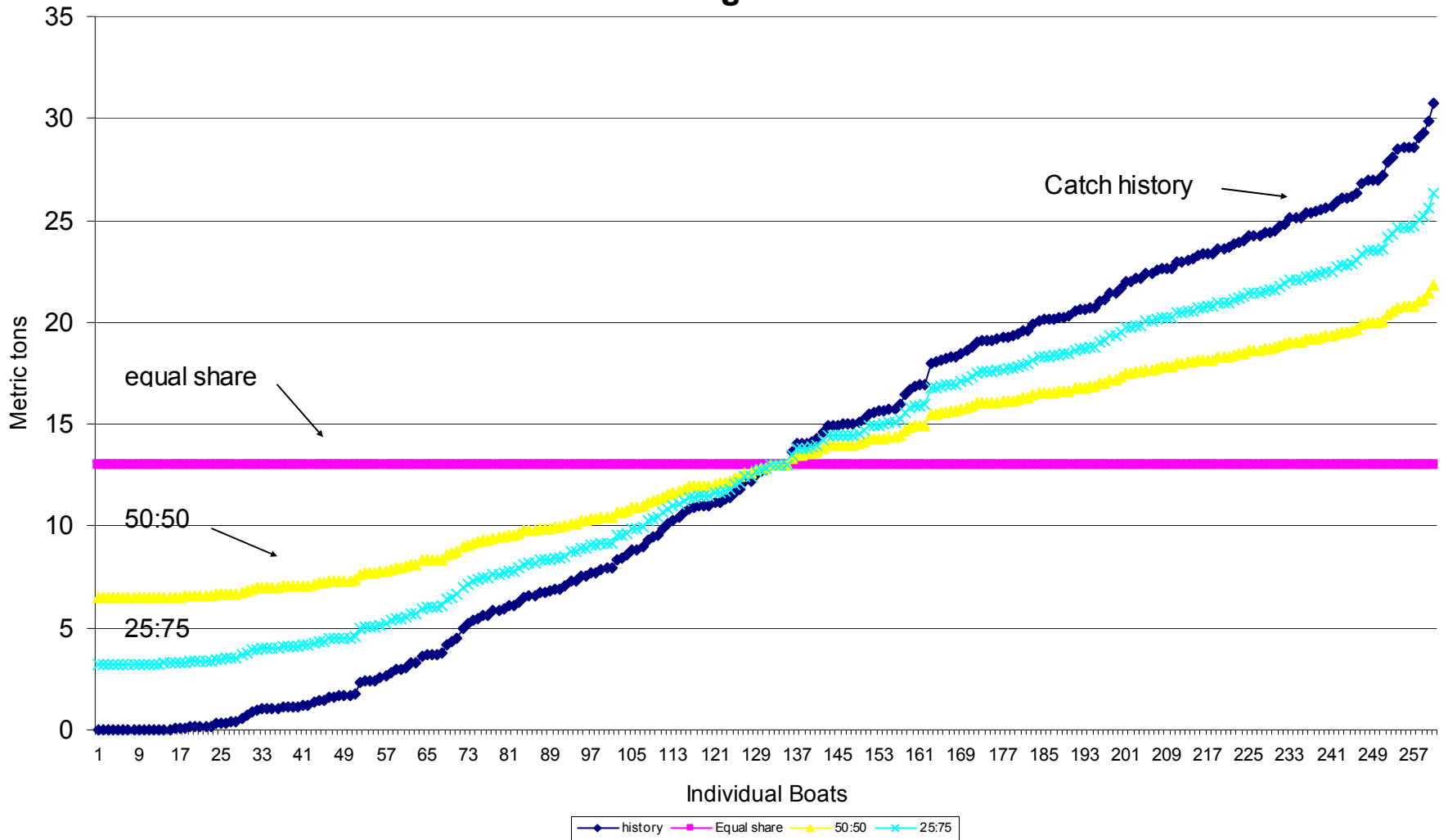
New Zealand Advice

- Sector Allocation
- Use Catch history
- Limit Accumulation

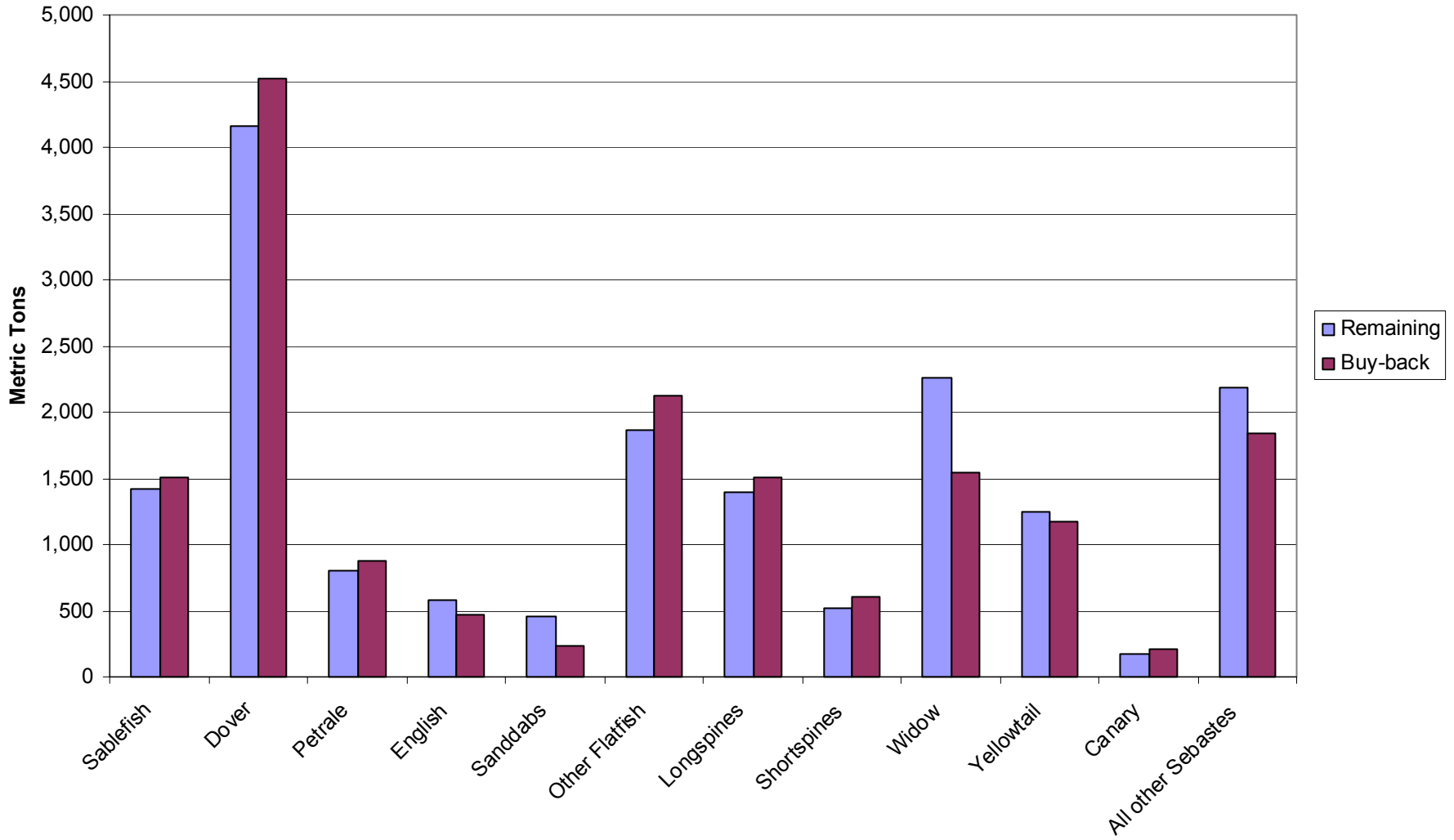
Possible ITQ Allocation Formulas

Sablefish

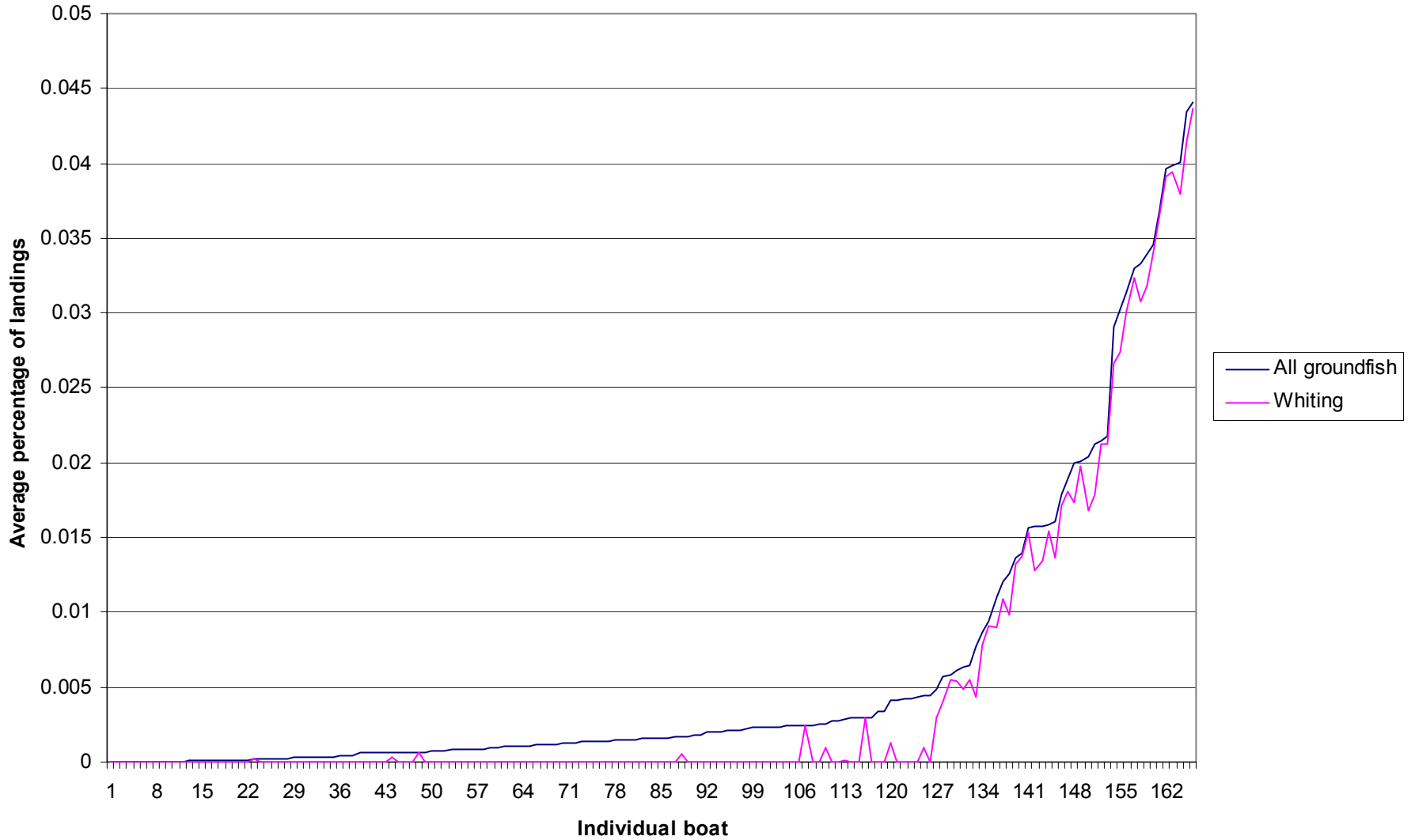
Mean Landings 1994-1998



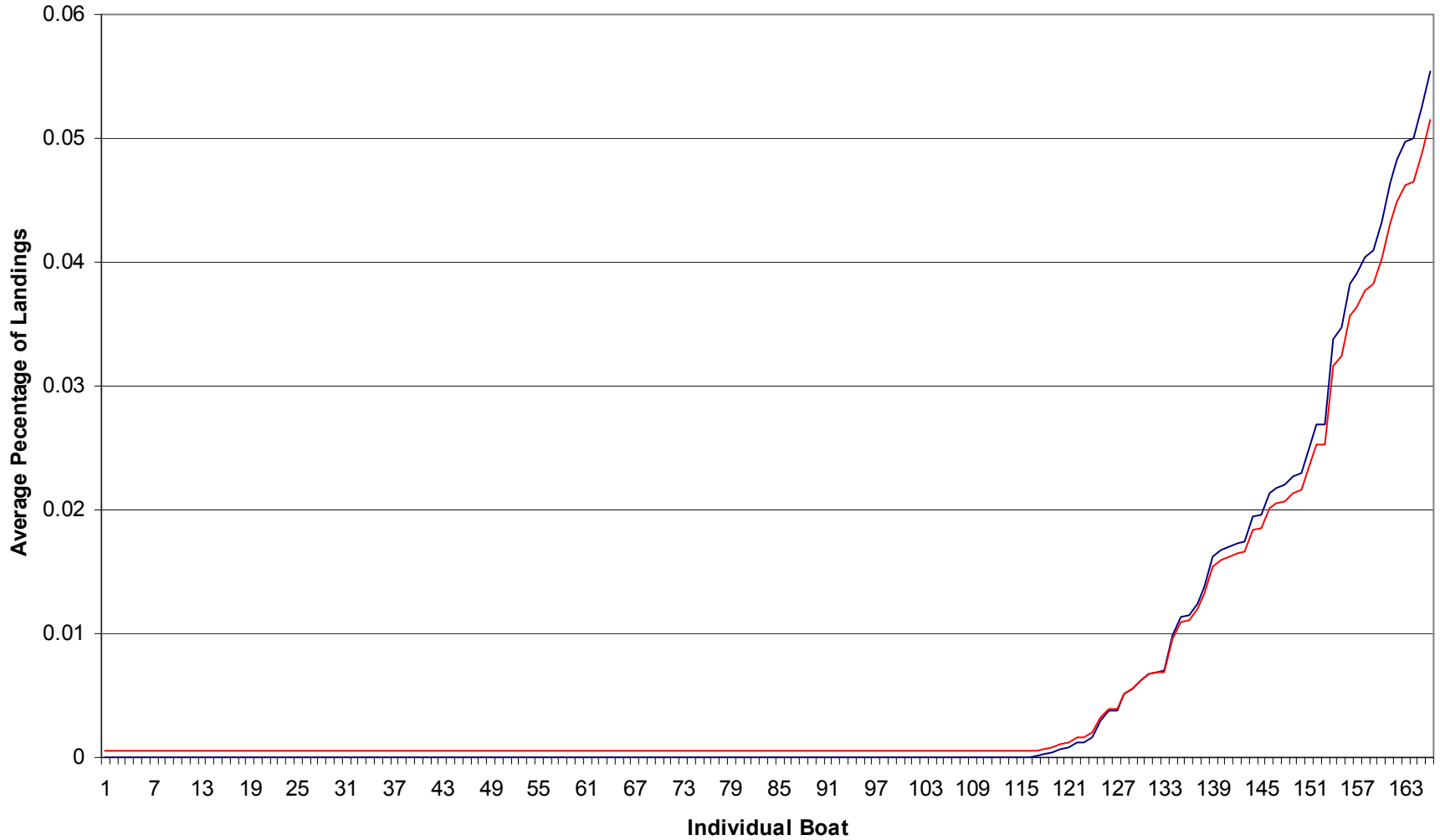
Comparison of the catch of the remaining fleet and the buy-back fleet 1994 to 2003



Historic Percentage of landings of all groundfish and Pacific whiting 1994-2003

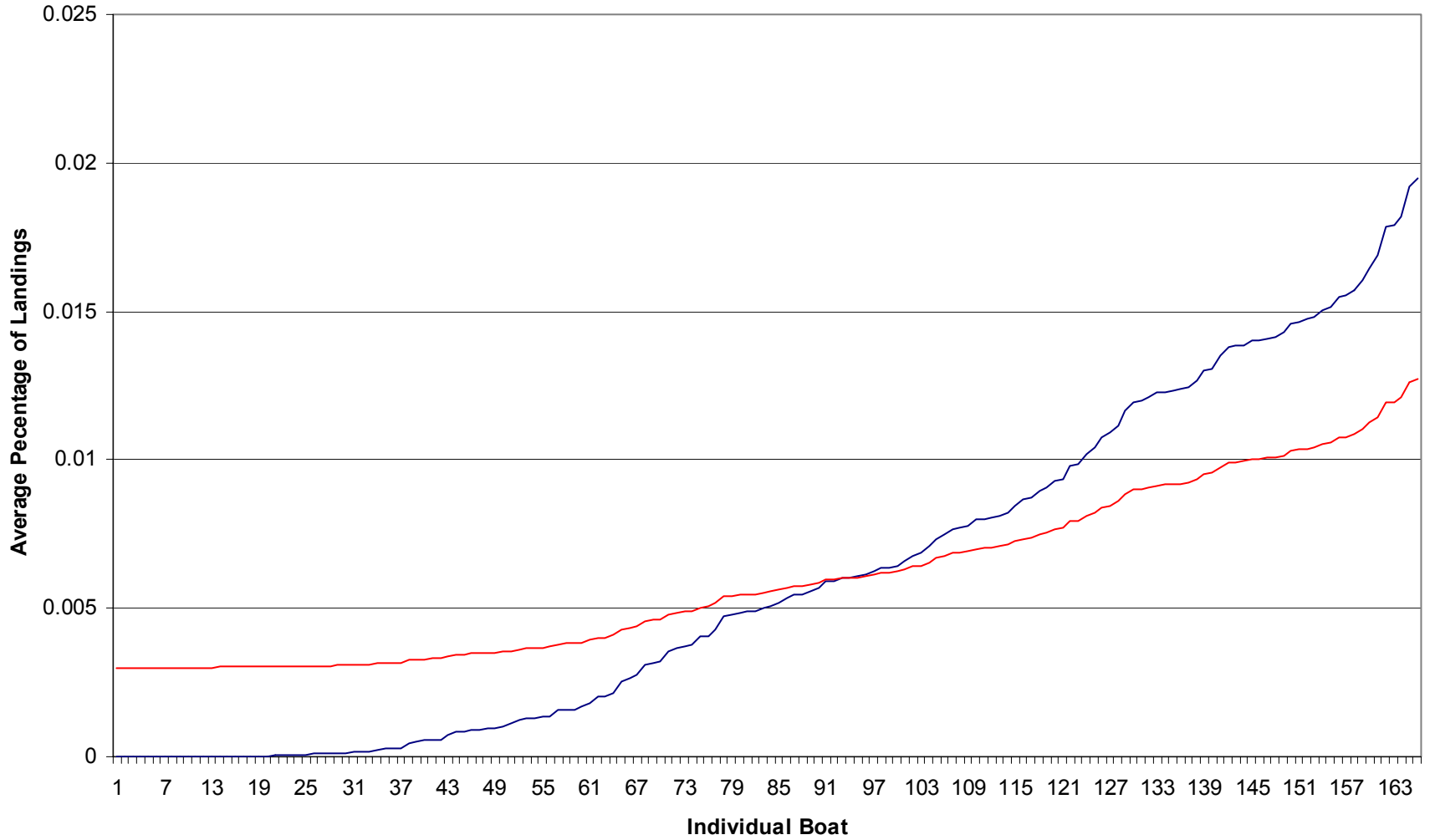


Historic Percentage of Landings of Whiting by Vessel

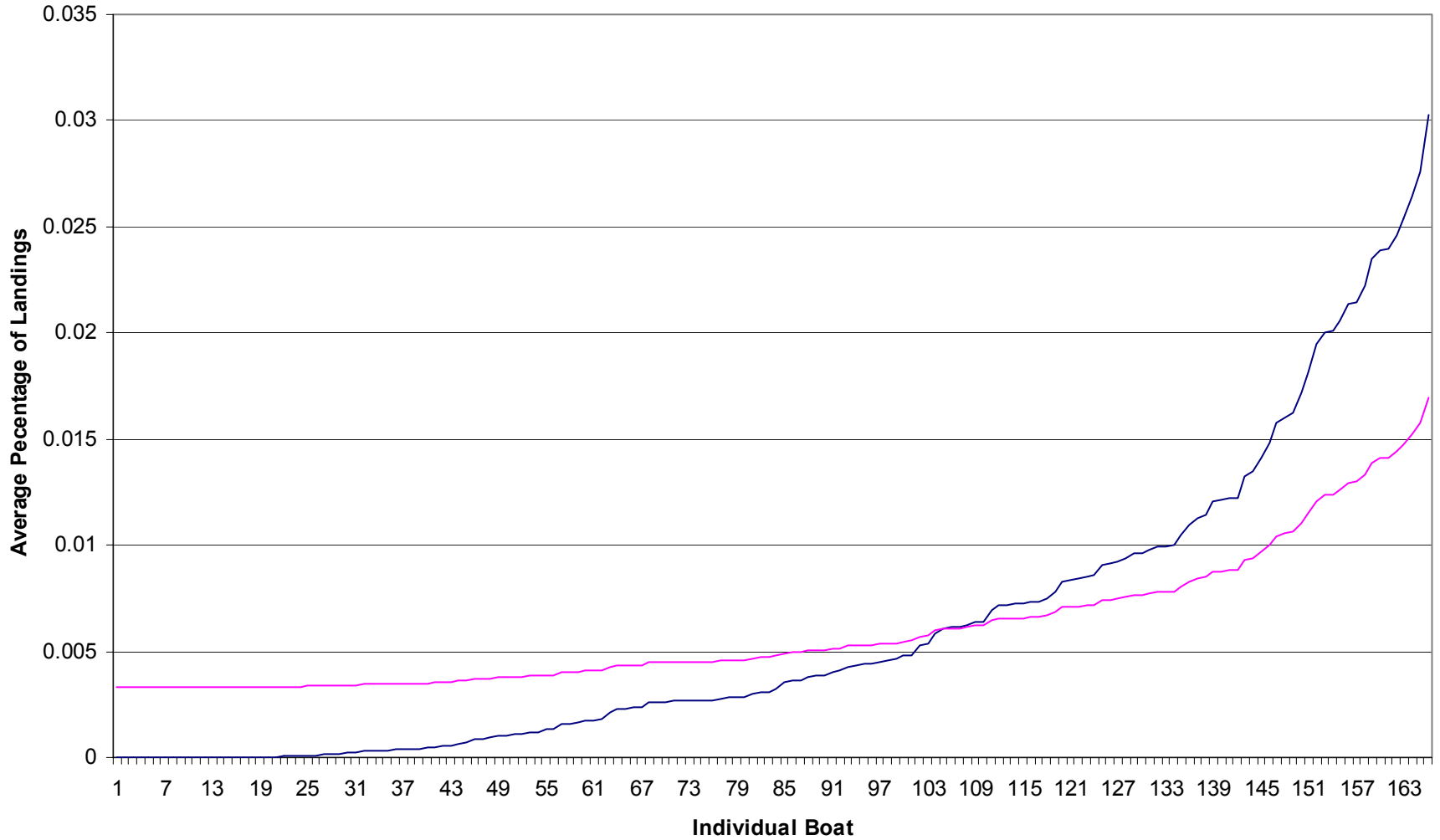


— History — History + Sharing

Historic Percentage of Landings of Dover by Vessel

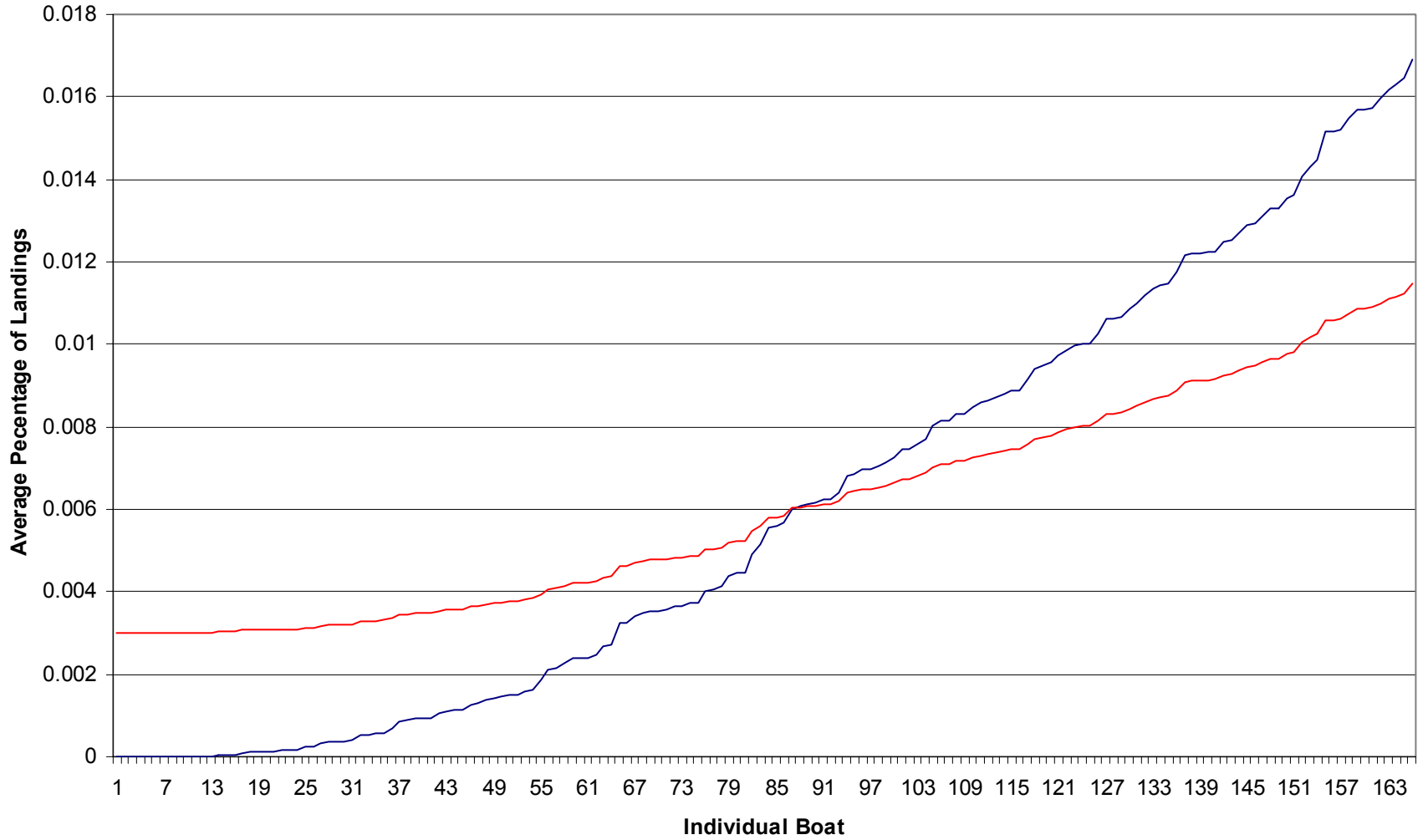


Historic Percentage of Landings of Petrale by Vessel



— History — History + Sharing

Historic Percentage of Landings of Sablefish by Vessel



— History — History + Sharing

